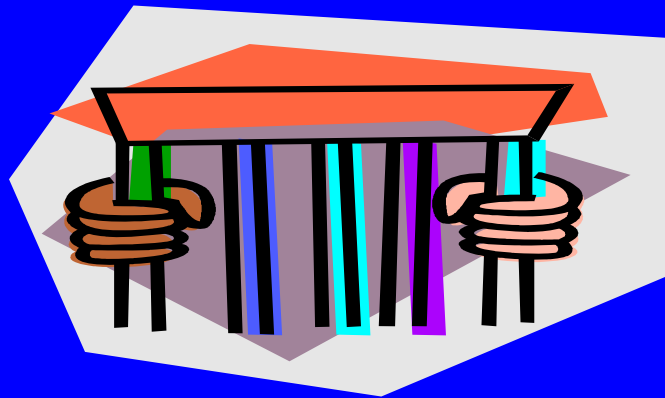


Eleventh Judicial Criminal Mental Health Project Jail Diversion Program

Making Jail the Last Resort



**Cindy A. Schwartz, MS, MBA
Project Director**

JAIL DIVERSION PROGRAM

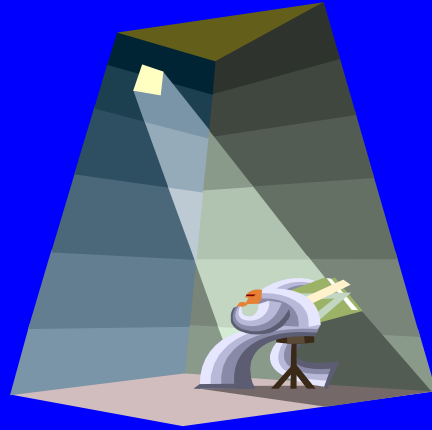
- **Target Populations: Individuals with severe mental illnesses that are at risk of or have been arrested for misdemeanors offenses.**
- **Goal: To assist the individuals to become diverted from jail and engaged in treatment, rehabilitation and support services that are essential to their long term, successful adaptation to community living.**

NEED

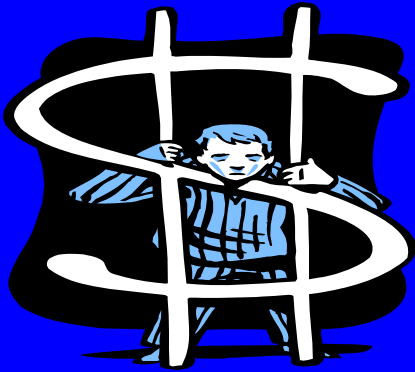
- **Miami-Dade County has among the highest percentage of persons with SMI of any urban community in the United States (9.1% or approximately 210,000 people)**
- **Less than 13% of these persons receive treatment**



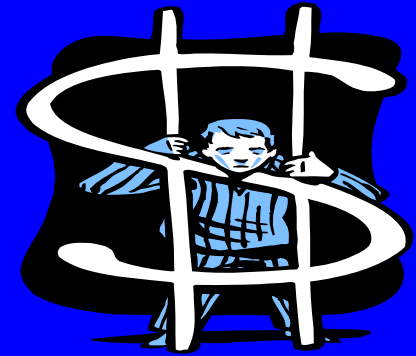
NEED



Although the Miami-Dade County jail has by default become the largest psychiatric institution in Florida, it cannot provide the necessary and appropriate treatment that is required for successful rehabilitation and recovery.



FACTS



- **There are 800-1200 detainees that experience mental illness on any given day at the Miami-Dade County jail.**
- **This represents approximately 20% of the total inmate population and costs taxpayers millions of dollars annually to manage this population in jail.**
- **Persons with mental illnesses stay in jail 8 times longer than those individuals without mental illness at a cost of 7 times more.**

TARGET GROUP

- **Estimated 90% Psychotic Disorders and 70% Co-Occurring Disorders**
 - **81% Male/ 19% Female**
 - **50% Homeless**
- **38% African-American, 32% White/Non-Hispanic, 30% Hispanic**
 - **Average Age: 45**



PRE-BOOKING



Crisis Intervention Team Policing (CIT)

CIT officers receive special training to respond to crisis calls involving persons with suspected mental illness. When appropriate, CIT officers transport individuals with mental illness to community mental health facilities for evaluation, treatment, and referrals instead of making an arrest. Twenty-two police departments are now involved in this program.



CIT



- **Collaboration between Police and Mental Health Facilities**
- **CIT training- experts in the community volunteer to present**
- **Changing Police values about people with mental illnesses**
- **Changing working relationships between Police and Mental Health Facilities**



CIT



- **33 of 33 Police Departments participate in CIT training**
- **More than 1,400 officers trained since 2003**
- **More than 800 CIT officers on Duty in throughout Miami-Dade County**

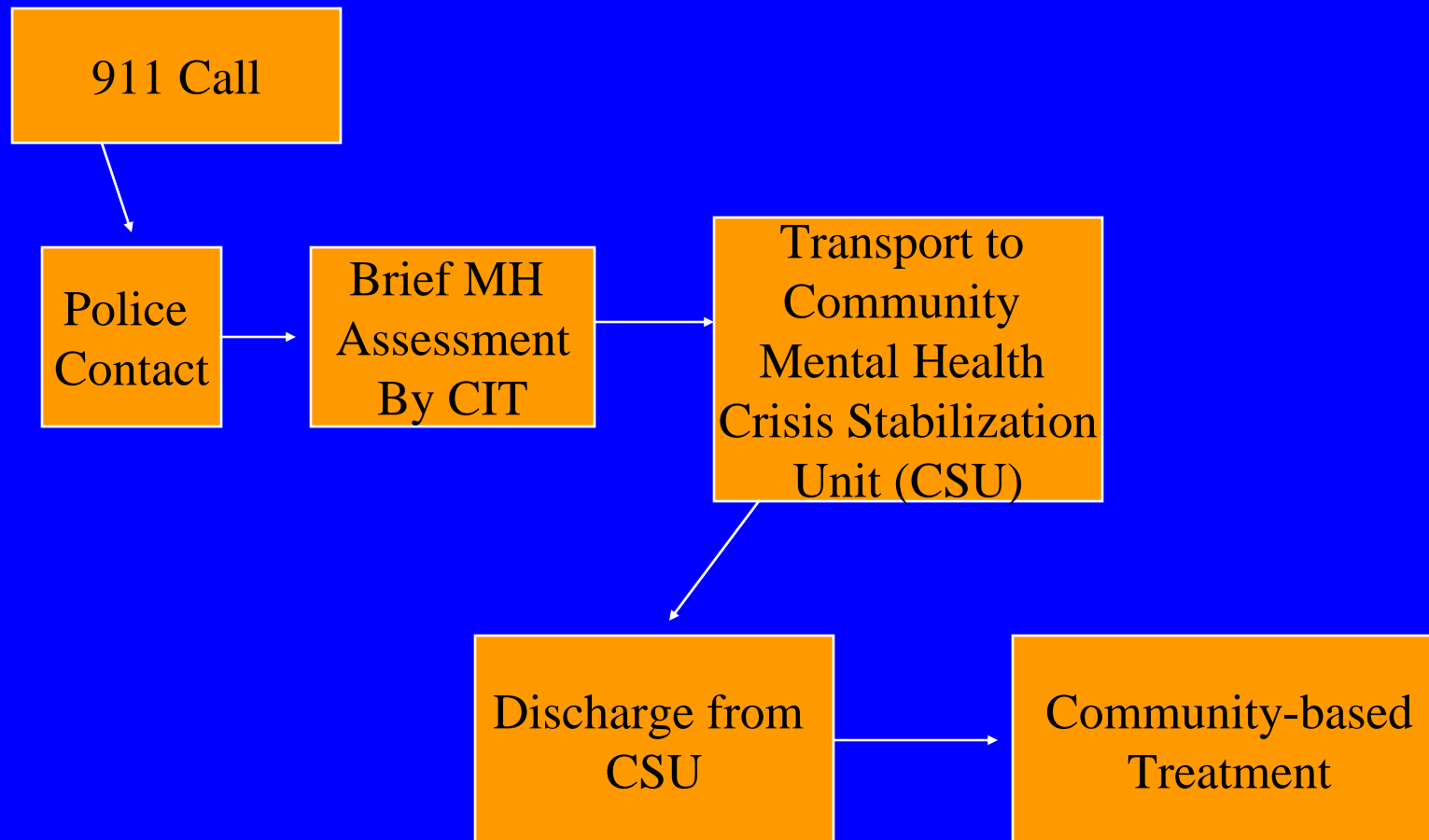


Meeting the Demand



- **12 CIT Trainings- 40 hour classes per year**
- **Communications Trainings for dispatchers and call takers**
- **Executive Training for Command Staff**

Pre-Booking Diversion Process



POST-BOOKING



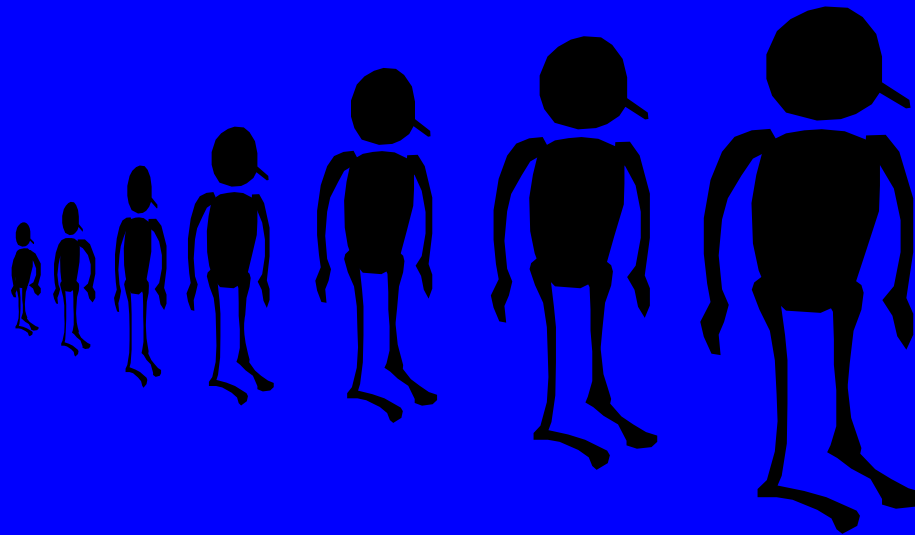
Misdemeanant defendants with mental illness are diverted from jail to community mental health facilities for appropriate treatment and continuing care within 24-48 hours after arrest.



State vs. Onwu

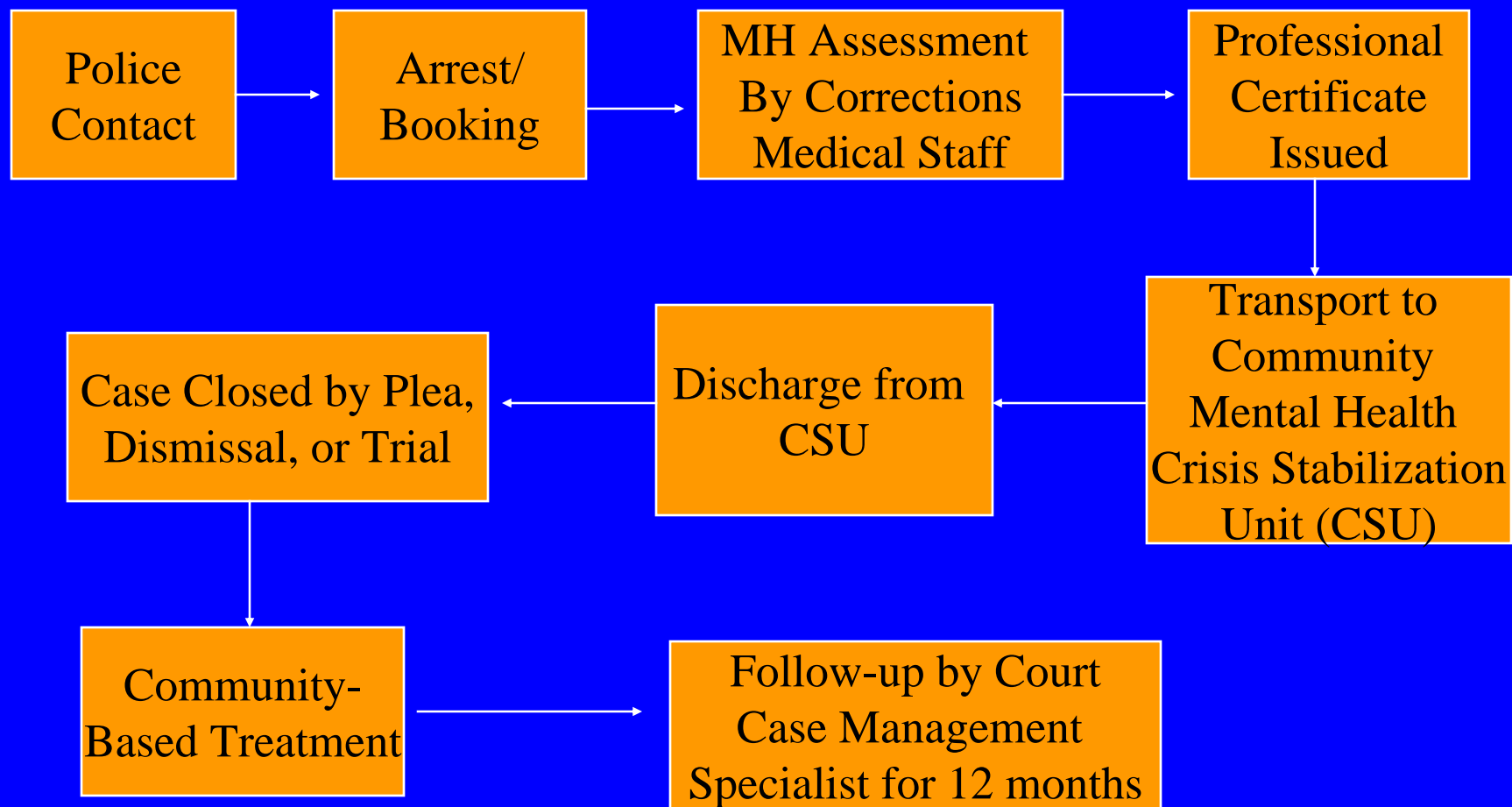
- **692 So. 2nd Florida 1997**
- **Now codified in law**
- **County Court Judges have NO authority to hospitalize a defendant who has been declared incompetent to stand trial**
- **The only option after they have been declared incompetent to stand trial is to utilize Conditional Release, which has no teeth**

POST-BOOKING



- **35 to 40 new referrals per month**
- **Continuing Care: 150 clients**
- **Clients served Annually: 300**

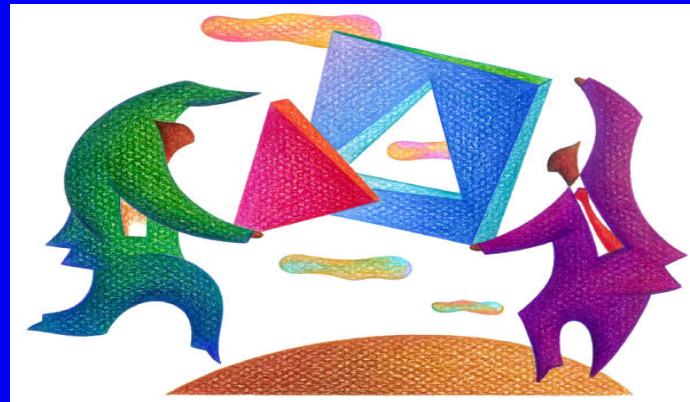
Post-Booking Diversion Process



Cooperative Agreement Outlines Procedural Process which includes:

- **Judges**
- **The Court**
- **Public Defender**
- **State Attorney**
- **Department of Corrections**
- **Jail Diversion Staff**
- **Mental Health Receiving Facilities**

Community-Based Continuum of Care



Linkage to Treatment and Services will assist the individuals to access the programs and services that are essential to successful rehabilitation outcomes and community re-entry.



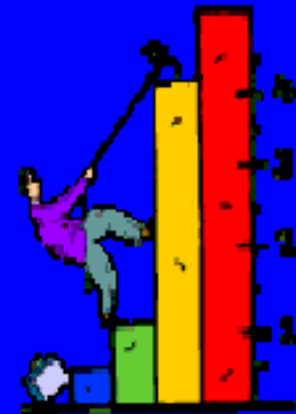
PEER SPECIALISTS

- **Peer support specialists assist jail diversion participants with community re-entry and engagement in continuing care services.**
- **Due to their life experience they are uniquely qualified to perform the functions of the position.**

RESOURCES

Identified and secured diverse funding streams to ensure essential treatment and services such as:

- housing
- treatment
- medication
- transportation
- ancillary services



GAP FUNDING

- **Interim Assistance Agreement between Miami-Dade County and SSA**
- **Designed to provide assistance for the period between application and approval of SSI/SSDI benefits.**
- **Funding for services provided will be reimbursed to the County when the individuals are approved and receive social security benefits.**

SOAR

SSI/SSDI, OUTREACH, ACCESS and RECOVERY

- **An approach that was developed to access and expedite social security entitlements for Individuals that are homeless and mentally ill**
- **Gap Funding in combination with SOAR will improve diversion efforts to community-based treatment and services upon discharge from jail**

ACCESS TO HOUSING



- **50% of individuals served are homeless at the time of arrest**
- **50% of clients are placed into housing**

RESIDENTIAL TREATMENT

Full continuum of Residential Treatment Beds
Capacity in DCF funded Programs is 498

- CSU
- SRT
- RTF
- Supportive Housing
- CST



Assisted Living Facility (ALF) Quality of Care Program

The court developed a monitoring program and referral system for ALFs in order to improve the quality of care and access to mental health services at these facilities. Participating ALFs are continuously monitored and evaluated by project staff. These facilities have agreed to conform with the court's standard of care.

HOMELESS CONTINUUM OF CARE

- **Emergency Shelters**
- **Transitional Housing**
- **Permanent Housing**

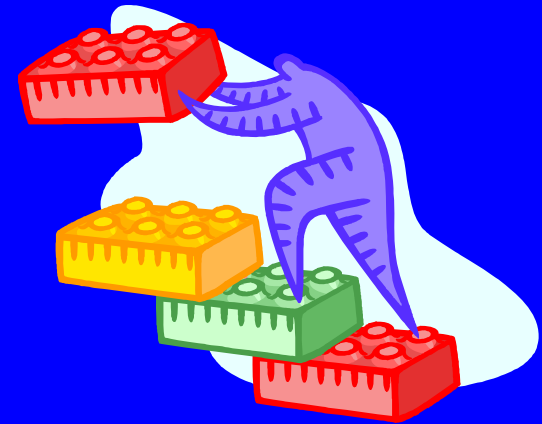


Creative Solutions



- **Expanding CIT Training to Meet Community Demand**
- **Peer Specialists**
- **GAP Funding and SOAR**
- **Access to Housing and Medication**
- **Mental Health Diversion Facility**

Milestones



2000: GAINS Summit

2001: Initial funding for CMHP

2002: CMHP Expansion Plan

2003: Awarded SAMHSA Grant

2004: Miami-Dade County Grand Jury Report:

Mental Illness and the Criminal Justice System: A Recipe for Disaster/ A Prescription for Improvement.

2005: Mayor's Mental Health Task Force

2006: Miami-Dade County sustained grant program positions

For more information contact:

Cindy A Schwartz, MS, MBA

Jail Diversion Expansion Project Director

Richard E. Gerstein Justice Building

1351 N.W. 12th St., Room 226

Miami, FL 33125

(305) 548-5319

cischwartz@jud11.flcourts.org